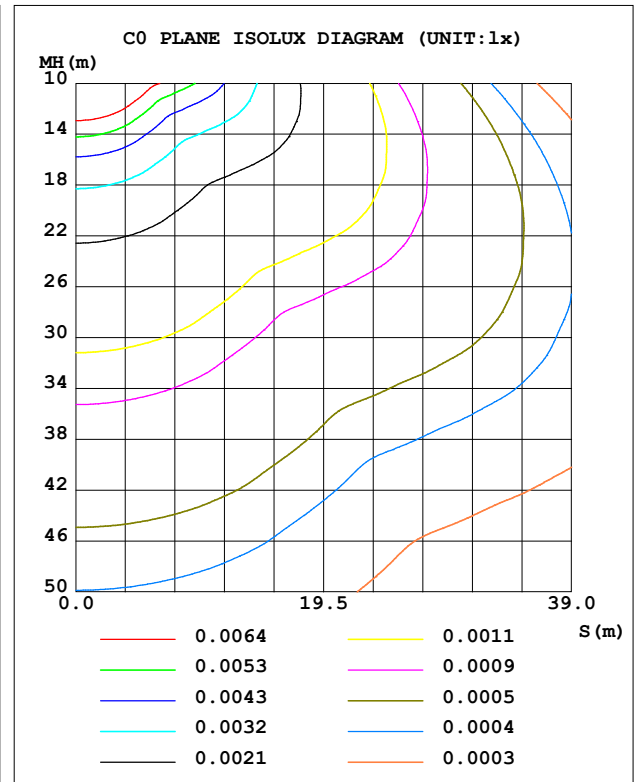
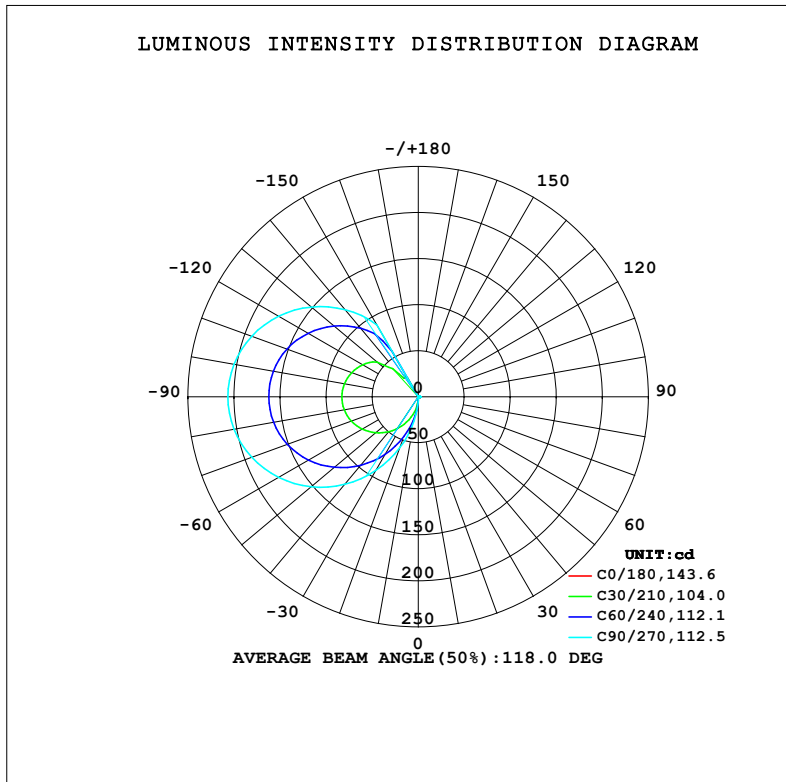


LUMINAIRE PHOTOMETRIC TEST REPORT

NAME: 99LPL094/ABR	TYPE:	WEIGHT: 1
SPEC.:	DIM.: 300 x 110 x 25	SERIAL No.: 0
MFR.: Elmark Industries JSC	SUR.: rectangle	Shielding Angle:

DATA OF LAMP		PHOTOMETRIC DATA			
MODEL	99LPL094/ABR	I <sub>max</sub> (cd)	206.7	S/MH (C0/180)	1.20
NOMINAL POWER (W)	9.4	LOR (%)	91.8	S/MH (C90/270)	13.02
RATED VOLTAGE (V)	230	TOTAL FLUX (lm)	560.89	η UP, DN (C0-180)	0.4, 0.6
NOMINAL FLUX (lm)	611	CIE CLASS	DIFFUSE	η UP, DN (C180-360)	43.9, 46.9
LAMPS INSIDE	1	η up (%)	44.4	CIBSE SHR NOM	0.00
TEST VOLTAGE (V)	230	η down (%)	47.4	CIBSE SHR MAX	0.00



C Range: 0 - 360DEG  
C Interval: 10.0DEG  
Test Speed: HIGH  
Temperature: 25.3°C  
Operators:  
Test Date: 13 December 2022

γ Range: 0 - 150DEG  
γ Interval: 2.5DEG  
Test System: EVERFINE GO-2000A\_V1 SYSTEM V2.00.456  
Humidity: 65.0%  
Test Distance: 6.265m [K=1.0000]  
Remarks:

### ZONAL FLUX DIAGRAM

#### ZONAL FLUX DIAGRAM:

$\gamma$	C0	C45	C90	C135	C180	C225	C270	C315	$\gamma$	$\Phi$ zone	$\Phi$ total	%lum, lamp
10	1.071	0.9073	0.8028	0.9070	1.030	16.42	26.63	17.63	0- 10	0.5254	0.5254	0.09,0.09
20	1.055	0.6849	0.6926	0.6945	0.9648	35.75	59.02	38.24	10- 20	3.776	4.301	0.77,0.70
30	1.047	0.6420	0.9587	0.6919	0.8558	56.03	92.42	59.81	20- 30	10.47	14.77	2.63,2.42
40	1.267	0.7840	1.241	0.8772	0.7332	75.37	124.1	80.32	30- 40	20.08	34.85	6.21,5.7
50	1.578	0.9394	1.470	1.067	0.5968	92.78	152.2	98.73	40- 50	31.46	66.31	11.8,10.9
60	1.755	1.043	1.676	1.186	0.4523	107.2	175.1	113.9	50- 60	43.13	109.4	19.5,17.9
70	1.739	1.094	1.821	1.262	0.3243	117.9	192.4	125.2	60- 70	53.54	163.0	29.1,26.7
80	1.695	1.108	1.886	1.283	0.2644	124.3	203.1	132.0	70- 80	61.32	224.3	40,36.7
90	1.644	1.103	1.874	1.282	0.2453	126.4	206.7	134.1	80- 90	65.43	289.7	51.7,47.4
100	1.532	1.065	1.812	1.251	0.2344	124.3	203.3	131.8	90-100	65.41	355.1	63.3,58.1
110	1.300	0.9796	1.659	1.163	0.2290	117.7	192.5	124.9	100-110	61.23	416.4	74.2,68.1
120	0.6521	0.8631	1.461	1.042	0.2262	106.9	175.1	113.6	110-120	53.23	469.6	83.7,76.9
130	0.2811	0.7263	1.227	0.9043	0.2208	92.39	151.8	98.30	120-130	42.30	511.9	91.3,83.8
140	0.2263	0.5897	0.9781	0.7580	0.2181	72.05	123.4	78.62	130-140	30.01	541.9	96.6,88.7
150	0.2126	0.4677	0.7406	0.6281	0.2181	30.35	90.03	31.88	140-150	17.61	559.5	99.8,91.6
160	0	0	0	0	0	0	0	0	150-160	1.365	560.9	100,91.8
170	0	0	0	0	0	0	0	0	160-170	0	560.9	100,91.8
180	0	0	0	0	0	0	0	0	170-180	0	560.9	100,91.8
DEG	LUMINOUS INTENSITY:cd									UNIT:lm		

Conical surface Flux(90deg): 49.101 lm

%lum = 8.8%

%lamp = 8.0%

Conical surface Flux(130deg): 135.05 lm

%lum = 24.1%

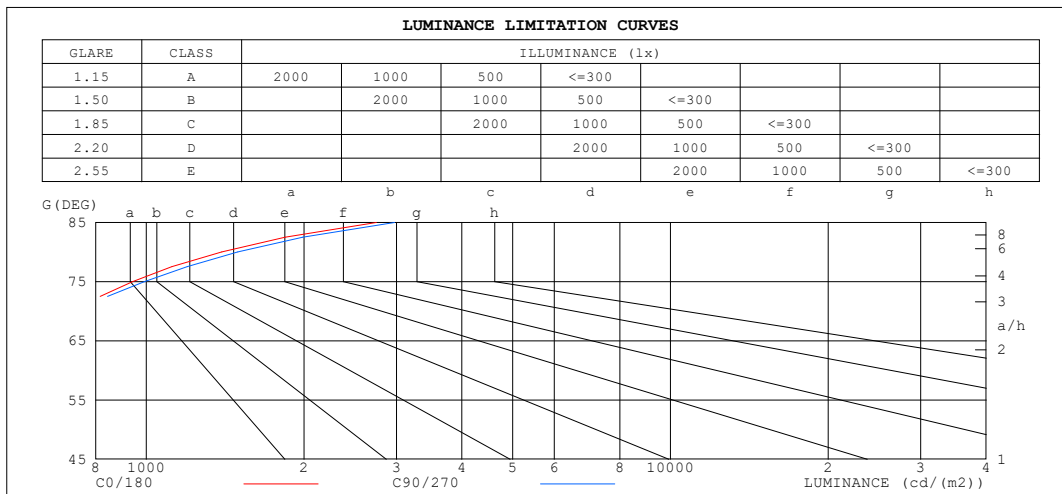
%lamp = 22.1%

C Range: 0 - 360DEG  
C Interval: 10.0DEG  
Test Speed: HIGH  
Temperature:25.3°C  
Operators:  
Test Date:13 December 2022

$\gamma$  Range: 0 - 150DEG  
 $\gamma$  Interval: 2.5DEG  
Test System:EVERFINE GO-2000A\_V1 SYSTEM V2.00.456  
Humidity:65.0%  
Test Distance:6.265m [K=1.0000]  
Remarks:

**LUMINANCE LIMITATION CURVES**

NAME: 99LPL094/ABR	TYPE:	WEIGHT: 1
SPEC.:	DIM.: 300 x 110 x 25	SERIAL No.: 0
MFR.: Elmark Industries JSC	SUR.: rectangle	Shielding Angle:



LUMINANCE cd/(m2)		
G (DEG)	C0/180	C90/270
85	2748	2976
80	1393	1494
75	941	992
70	725	732
65	596	571
60	501	461
55	421	378
50	350	315
45	289	265

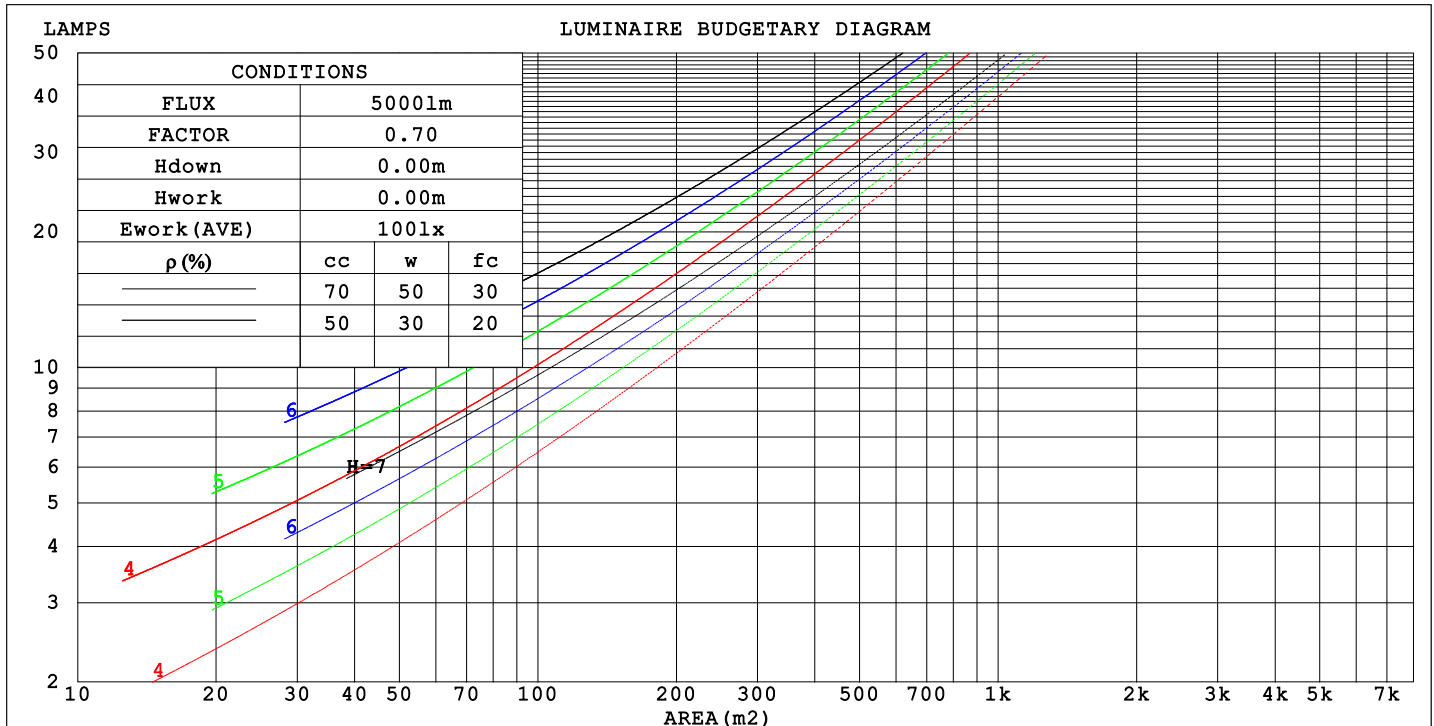
C Range: 0 - 360DEG  
 C Interval: 10.0DEG  
 Test Speed: HIGH  
 Temperature: 25.3°C  
 Operators:  
 Test Date: 13 December 2022

γ Range: 0 - 150DEG  
 γ Interval: 2.5DEG  
 Test System: EVERFINE GO-2000A\_V1 SYSTEM V2.00.456  
 Humidity: 65.0%  
 Test Distance: 6.265m [K=1.0000]  
 Remarks:

## CU AND LUMINAIRE BUDGETARY ESTIMATE DIAGRAM

NAME: 99LPL094/ABR	TYPE:	WEIGHT: 1
SPEC.:	DIM.: 300 x 110 x 25	SERIAL No.: 0
MFR.: Elmark Industries JSC	SUR.: rectangle	Shielding Angle:

pcc	80%			70%			50%			30%			10%			0
pw	50%	30%	10%	50%	30%	10%	50%	30%	10%	50%	30%	10%	50%	30%	10%	0
pfc	20%			20%			20%			20%			20%			0
RCR	RCR:Room Cavity Ratio															



C Range: 0 - 360DEG  
C Interval: 10.0DEG  
Test Speed: HIGH  
Temperature:25.3°C  
Operators:  
Test Date:13 December 2022

γ Range: 0 - 150DEG  
γ Interval: 2.5DEG  
Test System:EVERFINE GO-2000A\_V1 SYSTEM V2.00.456  
Humidity:65.0%  
Test Distance:6.265m [K=1.0000]  
Remarks:

## WEC AND CCEC

NAME: 99LPL094/ABR	TYPE:	WEIGHT: 1
SPEC.:	DIM.: 300 x 110 x 25	SERIAL No.: 0
MFR.: Elmark Industries JSC	SUR.: rectangle	Shielding Angle:

pcc	80%			70%			50%			30%			10%			0
pw	50%	30%	10%	50%	30%	10%	50%	30%	10%	50%	30%	10%	50%	30%	10%	0
pfc	20%			20%			20%			20%			20%			0
RCR	RCR:Room Cavity Ratio						Wall Exitance Coefficients(WEC)									
0.0																
1.0	.408	.232	.074	.388	.221	.070	.350	.201	.064	.315	.182	.058	.283	.164	.053	
2.0	.335	.184	.056	.317	.174	.054	.282	.157	.049	.250	.140	.044	.221	.125	.039	
3.0	.289	.154	.046	.273	.146	.044	.241	.130	.040	.211	.116	.036	.184	.102	.032	
4.0	.256	.133	.039	.240	.126	.037	.211	.112	.033	.184	.099	.030	.159	.086	.026	
5.0	.229	.117	.034	.215	.110	.032	.188	.098	.029	.164	.086	.026	.140	.075	.023	
6.0	.208	.104	.030	.195	.099	.028	.170	.087	.025	.147	.077	.023	.126	.066	.020	
7.0	.190	.094	.027	.178	.089	.025	.156	.079	.023	.134	.069	.020	.114	.059	.017	
8.0	.176	.086	.024	.164	.081	.023	.143	.072	.020	.123	.062	.018	.105	.054	.016	
9.0	.163	.079	.022	.152	.074	.021	.133	.066	.019	.114	.057	.016	.097	.049	.014	
10.0	.152	.073	.020	.142	.069	.019	.124	.061	.017	.106	.053	.015	.090	.045	.013	

pcc	80%			70%			50%			30%			10%			0
pw	50%	30%	10%	50%	30%	10%	50%	30%	10%	50%	30%	10%	50%	30%	10%	0
pfc	20%			20%			20%			20%			20%			0
RCR	RCR:Room Cavity Ratio						Ceiling Cavity Exitance Coefficients (CCEC)									
0.0	.513	.513	.513	.438	.438	.438	.299	.299	.299	.172	.172	.172	.055	.055	.055	
1.0	.515	.483	.454	.441	.415	.391	.301	.285	.271	.173	.165	.157	.056	.053	.051	
2.0	.510	.464	.425	.437	.399	.367	.300	.276	.256	.173	.161	.150	.055	.052	.049	
3.0	.504	.450	.407	.432	.388	.353	.297	.270	.248	.171	.158	.146	.055	.051	.048	
4.0	.497	.440	.396	.427	.380	.344	.293	.265	.242	.170	.155	.143	.055	.051	.047	
5.0	.490	.432	.388	.421	.373	.338	.290	.261	.239	.168	.153	.142	.054	.050	.047	
6.0	.483	.425	.383	.416	.368	.334	.287	.258	.236	.166	.152	.140	.054	.050	.046	
7.0	.477	.419	.379	.410	.364	.330	.283	.255	.234	.165	.150	.139	.053	.049	.046	
8.0	.471	.415	.376	.405	.360	.328	.280	.253	.233	.163	.149	.139	.053	.049	.046	
9.0	.465	.411	.374	.401	.356	.326	.278	.250	.231	.162	.148	.138	.052	.049	.046	
10.0	.460	.407	.372	.396	.353	.325	.275	.249	.231	.160	.147	.138	.052	.048	.046	

C Range: 0 - 360DEG  
C Interval: 10.0DEG  
Test Speed: HIGH  
Temperature:25.3°C  
Operators:  
Test Date:13 December 2022

γ Range: 0 - 150DEG  
γ Interval: 2.5DEG  
Test System:EVERFINE GO-2000A\_V1 SYSTEM V2.00.456  
Humidity:65.0%  
Test Distance:6.265m [K=1.0000]  
Remarks:

### UGR(Unified Glare Rating) Table

NAME: 99LPL094/ABR					TYPE:			WEIGHT: 1			
SPEC.:					DIM.: 300 x 110 x 25			SERIAL No.: 0			
MFR.: Elmark Industries JSC					SUR.: rectangle			Shielding Angle:			
ceiling/cavity	0.7	0.7	0.5	0.5	0.3	0.7	0.7	0.5	0.5	0.3	
walls	0.5	0.3	0.5	0.3	0.3	0.5	0.3	0.5	0.3	0.3	
working plane	0.2	0.2	0.2	0.2	0.2	0.2	0.2	0.2	0.2	0.2	
Room dimensions		Viewed crosswise					Viewed endwise				
x = 2H	y = 2H	-8.4	-7.2	-7.5	-6.3	-5.2	-4.3	-3.2	-3.5	-2.3	-1.1
	3H	-5.0	-3.9	-4.1	-3.0	-1.8	-0.5	0.6	0.4	1.5	2.7
	4H	-2.8	-1.8	-1.9	-0.9	0.3	1.7	2.6	2.5	3.6	4.8
	6H	-0.1	0.8	0.8	1.7	2.9	3.9	4.9	4.8	5.8	7.0
	8H	1.5	2.4	2.4	3.4	4.6	5.2	6.1	6.1	7.0	8.2
	12H	3.5	4.3	4.4	5.3	6.5	6.6	7.4	7.5	8.4	9.6
4H	2H	-6.6	-5.6	-5.7	-4.6	-3.5	-3.8	-2.9	-3.0	-1.9	-0.7
	3H	-3.6	-2.8	-2.7	-1.8	-0.6	0.3	1.1	1.2	2.1	3.3
	4H	-1.9	-1.1	-0.9	-0.1	1.2	2.6	3.4	3.5	4.3	5.6
	6H	0.4	1.1	1.3	2.1	3.3	5.1	5.8	6.0	6.8	8.0
	8H	1.8	2.4	2.7	3.4	4.7	6.4	7.1	7.4	8.1	9.4
	12H	3.7	4.3	4.6	5.3	6.6	8.0	8.6	9.0	9.6	10.9
8H	4H	-0.5	0.2	0.4	1.1	2.4	2.9	3.5	3.8	4.5	5.8
	6H	1.6	2.1	2.5	3.1	4.5	5.7	6.3	6.7	7.3	8.6
	8H	2.8	3.3	3.8	4.3	5.7	7.3	7.8	8.3	8.8	10.1
	12H	4.4	4.9	5.4	5.9	7.2	9.1	9.6	10.1	10.6	11.9
12H	4H	0.1	0.7	1.0	1.7	3.0	2.9	3.5	3.8	4.5	5.8
	6H	2.2	2.8	3.2	3.8	5.1	5.8	6.3	6.8	7.3	8.7
	8H	3.5	4.0	4.5	5.0	6.3	7.5	8.0	8.5	9.0	10.3
Variations with the observer position at spacings(CIE Pub.117):											
S = 1.0H		+ 0.6 / - 0.5					+ 0.1 / - 0.1				
1.5H		+ 1.3 / - 1.0					+ 0.2 / - 0.3				
2.0H		+ 2.0 / - 1.5					+ 0.3 / - 0.4				

CIE Pub.117, 611.0 lm Total Lamp Luminous Flux Correct ( $8\log(F/F_0) = -1.7$ )  
Area: 0.007 m<sup>2</sup>

C Range: 0 - 360DEG  
C Interval: 10.0DEG  
Test Speed: HIGH  
Temperature:25.3°C  
Operators:  
Test Date:13 December 2022

$\gamma$  Range: 0 - 150DEG  
 $\gamma$  Interval: 2.5DEG  
Test System:EVERFINE GO-2000A\_V1 SYSTEM V2.00.456  
Humidity:65.0%  
Test Distance:6.265m [K=1.0000]  
Remarks:

### UTILIZATION FACTORS TABLE

NAME: 99LPL094/ABR	TYPE:	WEIGHT: 1
SPEC.:	DIM.: 300 x 110 x 25	SERIAL No.: 0
MFR.: Elmark Industries JSC	SUR.: rectangle	Shielding Angle:

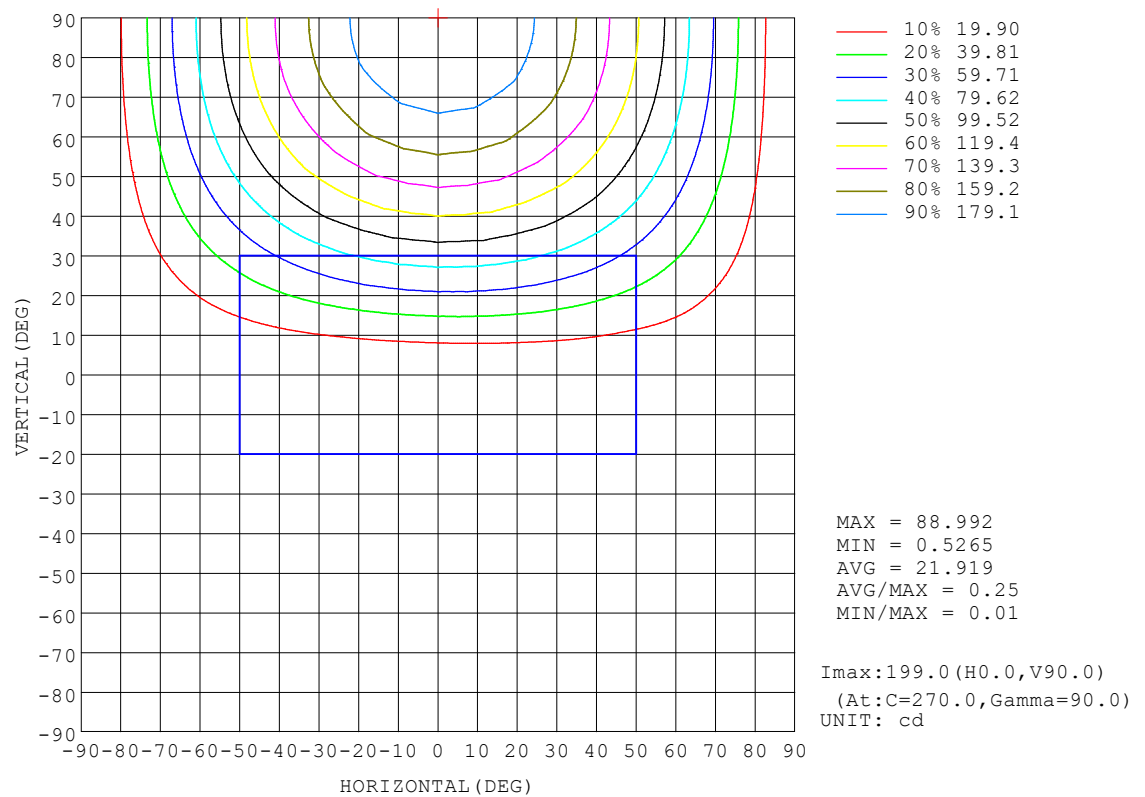
REFLECTANCE										
Ceiling	0.8	0.8	0.8	0.7	0.7	0.7	0.5	0.5	0.5	0
Walls	0.7	0.5	0.3	0.7	0.5	0.3	0.7	0.5	0.3	0
Working plane	0.2	0.2	0.2	0.2	0.2	0.2	0.2	0.2	0.2	0
ROOM INDEX	UTILIZATION FACTORS (PERCENT) $k(RI) \times RCR = 5$									
$k = 0.60$	31	19	12	29	18	11	26	16	10	4
0.80	39	25	17	36	24	16	32	21	15	6
1.00	45	31	23	42	30	21	37	28	19	9
1.25	51	38	28	48	35	27	41	31	24	11
1.50	56	43	33	52	40	31	45	35	28	14
2.00	64	51	41	59	48	39	50	41	34	18
2.50	69	57	47	63	53	44	54	45	39	20
3.00	72	61	53	67	57	49	57	49	43	23
4.00	78	68	60	71	63	56	60	54	48	27
5.00	81	73	65	75	67	61	63	57	52	29
ROOM INDEX	UF(total)									Direct
According to DIN EN 13032-2 2004			Suspended					SHRNOM = 1.25		

C Range: 0 - 360DEG  
C Interval: 10.0DEG  
Test Speed: HIGH  
Temperature: 25.3°C  
Operators:  
Test Date: 13 December 2022

γ Range: 0 - 150DEG  
γ Interval: 2.5DEG  
Test System: EVERFINE GO-2000A\_V1 SYSTEM V2.00.456  
Humidity: 65.0%  
Test Distance: 6.265m [K=1.0000]  
Remarks:

ISOCANDELA DIAGRAM

NAME: 99LPL094/ABR	TYPE:	WEIGHT: 1
SPEC.:	DIM.: 300 x 110 x 25	SERIAL No.: 0
MFR.: Elmark Industries JSC	SUR.: rectangle	Shielding Angle:



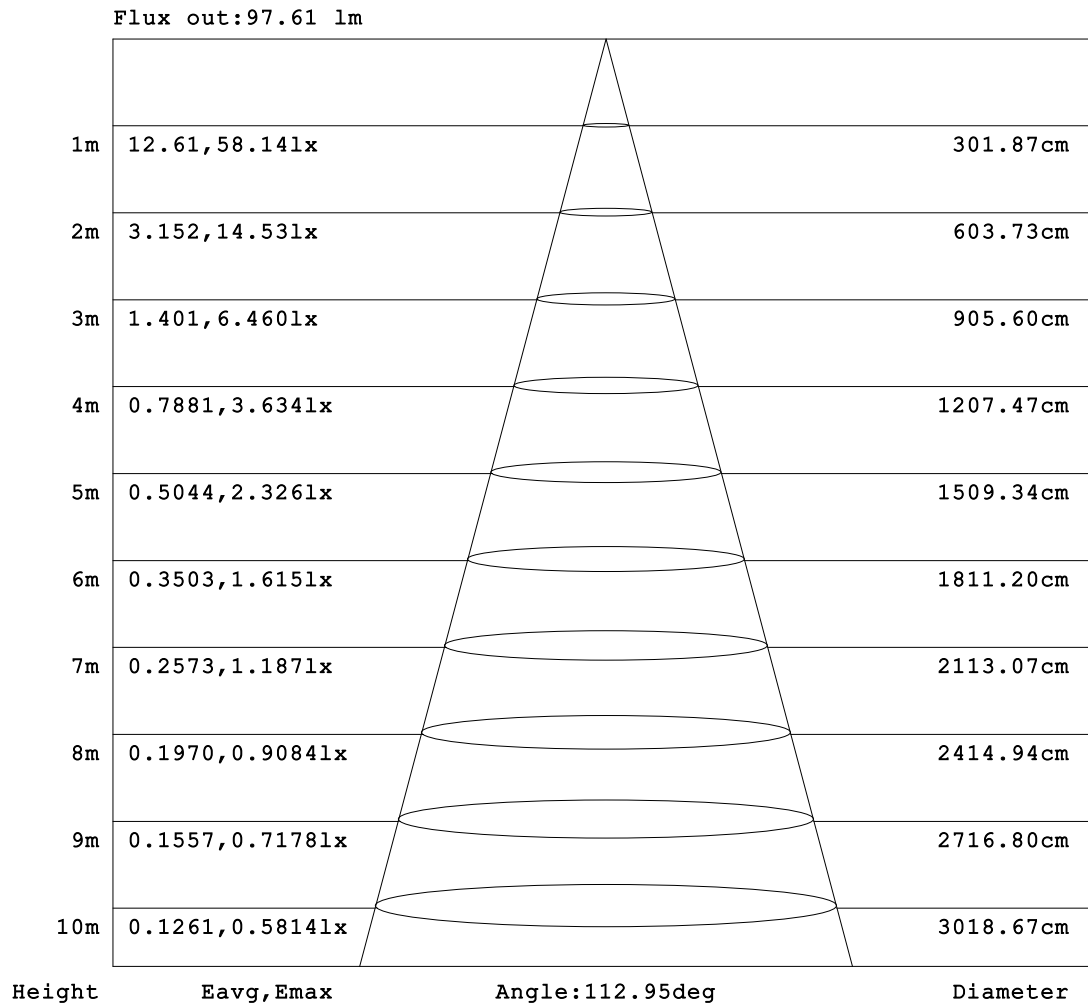
C Range: 0 - 360DEG  
 C Interval: 10.0DEG  
 Test Speed: HIGH  
 Temperature:25.3°C  
 Operators:  
 Test Date:13 December 2022

γ Range: 0 - 150DEG  
 γ Interval: 2.5DEG  
 Test System:EVERFINE GO-2000A\_V1 SYSTEM V2.00.456  
 Humidity:65.0%  
 Test Distance:6.265m [K=1.0000]  
 Remarks:



**AAI Figure**

NAME: 99LPL094/ABR	TYPE:	WEIGHT: 1
SPEC.:	DIM.: 300 x 110 x 25	SERIAL No.: 0
MFR.: Elmark Industries JSC	SUR.: rectangle	Shielding Angle:



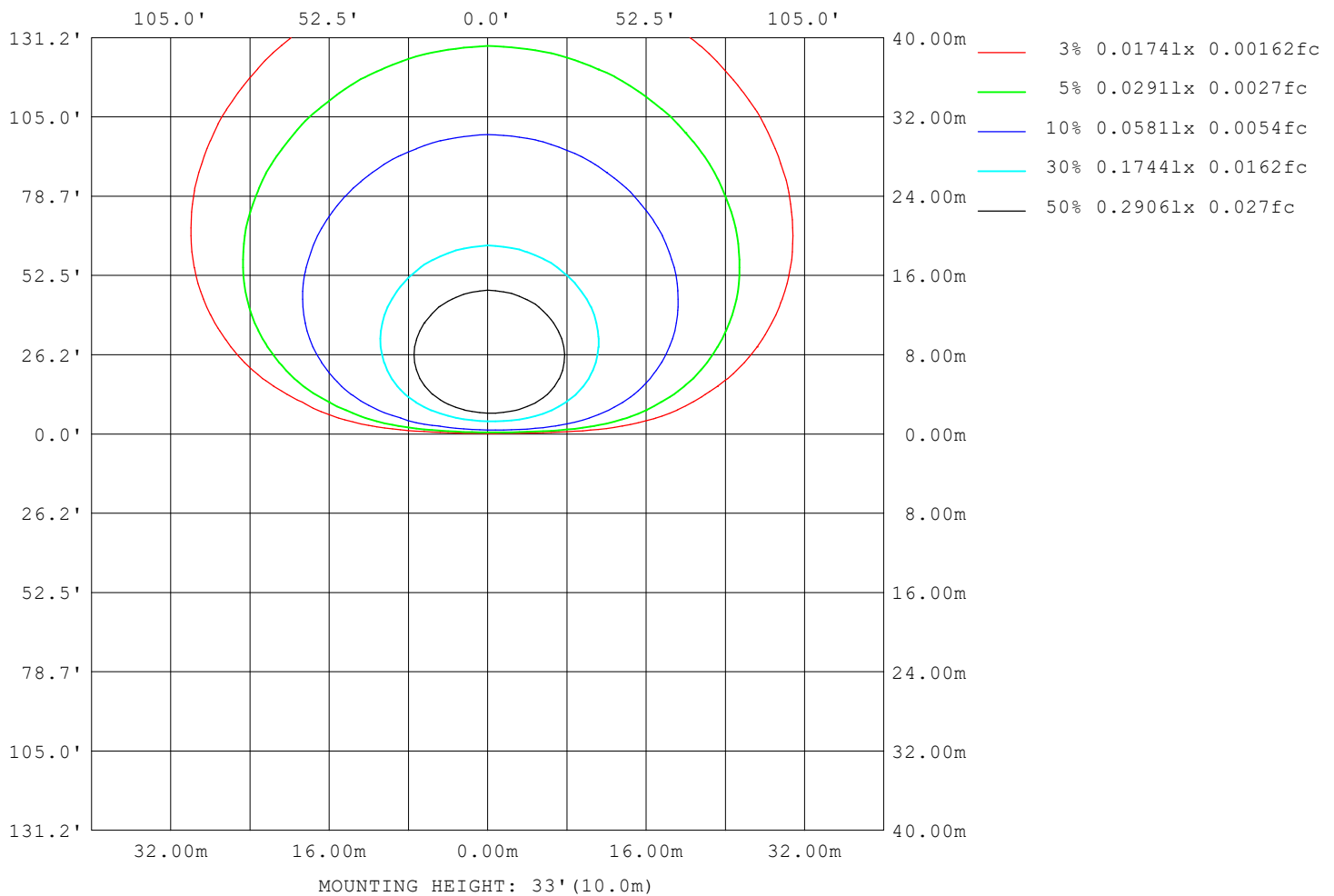
**Note:** The Curves indicate the illuminated area and the average illumination when the luminaire is at different distance.

C Range: 0 - 360DEG  
 C Interval: 10.0DEG  
 Test Speed: HIGH  
 Temperature: 25.3°C  
 Operators:  
 Test Date: 13 December 2022

γ Range: 0 - 150DEG  
 γ Interval: 2.5DEG  
 Test System: EVERFINE GO-2000A\_V1 SYSTEM V2.00.456  
 Humidity: 65.0%  
 Test Distance: 6.265m [K=1.0000]  
 Remarks:

**ISOLUX DIAGRAM**

NAME: 99LPL094/ABR	TYPE:	WEIGHT: 1
SPEC.:	DIM.: 300 x 110 x 25	SERIAL No.: 0
MFR.: Elmark Industries JSC	SUR.: rectangle	Shielding Angle:



C Range: 0 - 360DEG  
C Interval: 10.0DEG  
Test Speed: HIGH  
Temperature: 25.3°C  
Operators:  
Test Date: 13 December 2022

γ Range: 0 - 150DEG  
γ Interval: 2.5DEG  
Test System: EVERFINE GO-2000A\_V1 SYSTEM V2.00.456  
Humidity: 65.0%  
Test Distance: 6.265m [K=1.0000]  
Remarks:

### LED Avg.L Report

NAME: 99LPL094/ABR	TYPE:	WEIGHT: 1
SPEC.:	DIM.: 300 x 110 x 25	SERIAL No.: 0
MFR.: Elmark Industries JSC	SUR.: rectangle	Shielding Angle:

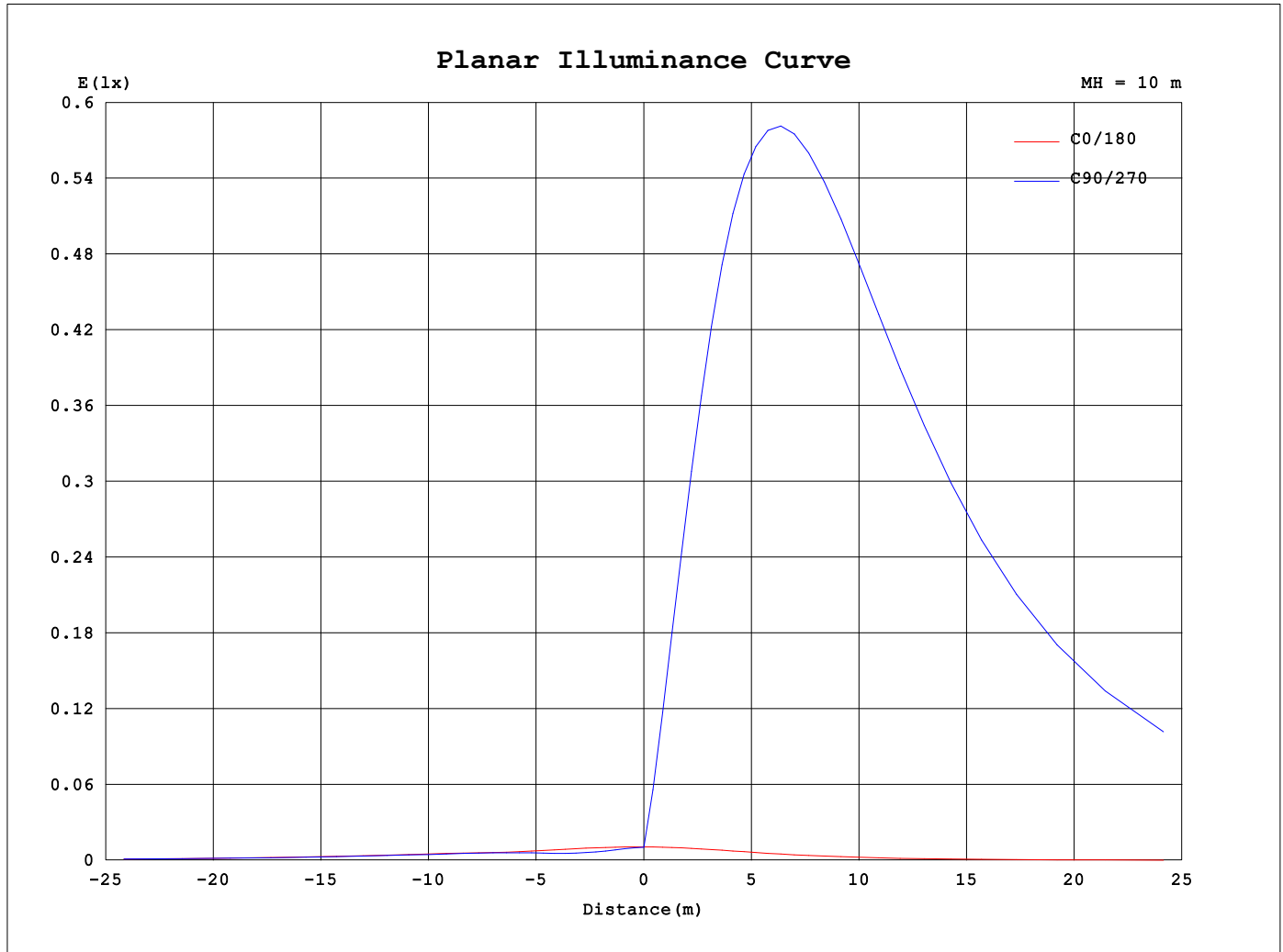
AvgL	cd/m2
L_0~180 (65) av	363
L_0~180 (75) av	551
L_0~180 (85) av	1584
L_90~270 (65) av	31485
L_90~270 (75) av	55328
L_90~270 (85) av	170252
L_45 (65) av	19965
L_45 (75) av	35064
L_45 (85) av	107664

Standard: GB/T 29293-2012

C Range: 0 - 360DEG  
C Interval: 10.0DEG  
Test Speed: HIGH  
Temperature:25.3°C  
Operators:  
Test Date:13 December 2022

γ Range: 0 - 150DEG  
γ Interval: 2.5DEG  
Test System:EVERFINE GO-2000A\_V1 SYSTEM V2.00.456  
Humidity:65.0%  
Test Distance:6.265m [K=1.0000]  
Remarks:

### Planar Illuminance Curve



C Range: 0 - 360DEG  
 C Interval: 10.0DEG  
 Test Speed: HIGH  
 Temperature: 25.3°C  
 Operators:  
 Test Date: 13 December 2022

$\gamma$  Range: 0 - 150DEG  
 $\gamma$  Interval: 2.5DEG  
 Test System: EVERFINE GO-2000A\_V1 SYSTEM V2.00.456  
 Humidity: 65.0%  
 Test Distance: 6.265m [K=1.0000]  
 Remarks:

## LUMINOUS DISTRIBUTION INTENSITY DATA

NAME: 99LPL094/ABR	TYPE:	WEIGHT: 1
SPEC.:	DIM.: 300 x 110 x 25	SERIAL No.: 0
MFR.: Elmark Industries JSC	SUR.: rectangle	Shielding Angle:

Table--1

UNIT: cd

C (DEG) γ (DEG)	0	10	20	30	40	50	60	70	80	90	100	110	120	130	140	150	160	170	180
0	1.07	1.07	1.07	1.07	1.07	1.07	1.07	1.07	1.07	1.07	1.07	1.07	1.07	1.07	1.07	1.07	1.07	1.07	1.07
5	1.07	1.05	1.04	1.02	0.99	0.99	0.97	0.97	0.96	0.96	0.94	0.97	0.97	0.99	0.99	1.02	1.03	1.05	1.06
10	1.07	1.03	0.99	0.96	0.92	0.90	0.87	0.84	0.82	0.80	0.80	0.83	0.86	0.90	0.91	0.95	0.98	1.01	1.03
15	1.07	0.98	0.93	0.86	0.81	0.79	0.78	0.74	0.71	0.70	0.70	0.74	0.78	0.78	0.79	0.85	0.91	0.97	1.00
20	1.05	0.94	0.86	0.77	0.70	0.67	0.68	0.69	0.66	0.69	0.66	0.70	0.68	0.68	0.70	0.77	0.86	0.93	0.96
25	1.05	0.89	0.81	0.72	0.65	0.64	0.64	0.74	0.73	0.80	0.73	0.76	0.66	0.69	0.67	0.72	0.80	0.86	0.91
30	1.05	0.82	0.71	0.63	0.60	0.69	0.74	0.88	0.88	0.96	0.88	0.92	0.79	0.75	0.64	0.65	0.71	0.79	0.86
35	1.14	0.77	0.66	0.59	0.61	0.79	0.84	1.01	1.02	1.10	1.02	1.05	0.91	0.87	0.69	0.64	0.65	0.74	0.80
40	1.27	0.69	0.60	0.59	0.69	0.88	0.94	1.12	1.14	1.24	1.15	1.18	1.03	0.98	0.78	0.68	0.61	0.67	0.73
45	1.43	0.63	0.54	0.65	0.76	0.97	1.05	1.24	1.25	1.36	1.26	1.31	1.14	1.09	0.86	0.76	0.58	0.60	0.67
50	1.58	0.56	0.52	0.71	0.82	1.06	1.14	1.33	1.35	1.47	1.37	1.41	1.24	1.19	0.95	0.83	0.58	0.55	0.60
55	1.69	0.50	0.52	0.76	0.89	1.12	1.20	1.42	1.45	1.57	1.47	1.50	1.32	1.26	1.03	0.89	0.64	0.51	0.54
60	1.76	0.43	0.55	0.80	0.93	1.16	1.27	1.50	1.54	1.68	1.55	1.58	1.39	1.31	1.06	0.95	0.67	0.50	0.45
65	1.77	0.40	0.57	0.79	0.94	1.21	1.33	1.58	1.62	1.75	1.63	1.66	1.45	1.36	1.10	0.95	0.70	0.50	0.38
70	1.74	0.40	0.59	0.79	0.95	1.24	1.37	1.63	1.67	1.82	1.69	1.72	1.50	1.41	1.12	0.95	0.71	0.51	0.32
75	1.71	0.40	0.59	0.78	0.97	1.25	1.41	1.68	1.72	1.87	1.73	1.76	1.54	1.43	1.14	0.95	0.71	0.51	0.29
80	1.70	0.38	0.57	0.77	0.97	1.25	1.43	1.69	1.74	1.89	1.76	1.77	1.55	1.43	1.14	0.94	0.71	0.49	0.26
85	1.68	0.35	0.55	0.76	0.97	1.25	1.44	1.69	1.76	1.89	1.77	1.77	1.56	1.43	1.15	0.94	0.70	0.48	0.25
90	1.64	0.34	0.53	0.74	0.97	1.24	1.44	1.68	1.76	1.87	1.77	1.76	1.56	1.42	1.15	0.94	0.69	0.47	0.25
95	1.59	0.33	0.52	0.73	0.97	1.23	1.44	1.66	1.75	1.85	1.76	1.74	1.56	1.41	1.15	0.93	0.69	0.47	0.24
100	1.53	0.32	0.51	0.72	0.94	1.19	1.40	1.61	1.71	1.81	1.72	1.69	1.53	1.38	1.13	0.91	0.68	0.47	0.23
105	1.44	0.32	0.49	0.69	0.91	1.15	1.35	1.55	1.65	1.74	1.66	1.64	1.48	1.33	1.10	0.88	0.67	0.46	0.23
110	1.30	0.31	0.48	0.66	0.87	1.10	1.28	1.48	1.57	1.66	1.59	1.57	1.42	1.27	1.06	0.86	0.65	0.46	0.23
115	0.97	0.31	0.46	0.63	0.82	1.04	1.21	1.40	1.48	1.57	1.50	1.48	1.34	1.21	1.01	0.82	0.63	0.46	0.23
120	0.65	0.29	0.44	0.59	0.77	0.96	1.13	1.30	1.39	1.46	1.41	1.39	1.26	1.14	0.95	0.79	0.62	0.44	0.23
125	0.42	0.28	0.42	0.55	0.71	0.88	1.04	1.20	1.28	1.35	1.30	1.28	1.17	1.06	0.90	0.74	0.59	0.44	0.23
130	0.28	0.27	0.40	0.51	0.65	0.81	0.94	1.08	1.17	1.23	1.19	1.17	1.08	0.98	0.83	0.70	0.57	0.43	0.22
135	0.24	0.26	0.37	0.47	0.59	0.72	0.85	0.97	1.05	1.10	1.08	1.06	0.98	0.89	0.77	0.66	0.55	0.42	0.22
140	0.23	0.25	0.35	0.43	0.54	0.65	0.76	0.86	0.93	0.98	0.96	0.95	0.87	0.81	0.71	0.61	0.52	0.41	0.22
145	0.22	0.25	0.32	0.39	0.49	0.57	0.67	0.75	0.82	0.85	0.84	0.83	0.79	0.73	0.65	0.56	0.49	0.40	0.22
150	0.21	0.24	0.30	0.36	0.43	0.51	0.58	0.65	0.70	0.74	0.73	0.75	0.69	0.67	0.59	0.55	0.46	0.39	0.22
155	0.00	0.00	0.00	0.00	0.00	0.00	0.00	0.00	0.00	0.00	0.00	0.00	0.00	0.00	0.00	0.00	0.00	0.00	0.00
160	0.00	0.00	0.00	0.00	0.00	0.00	0.00	0.00	0.00	0.00	0.00	0.00	0.00	0.00	0.00	0.00	0.00	0.00	0.00
165	0.00	0.00	0.00	0.00	0.00	0.00	0.00	0.00	0.00	0.00	0.00	0.00	0.00	0.00	0.00	0.00	0.00	0.00	0.00
170	0.00	0.00	0.00	0.00	0.00	0.00	0.00	0.00	0.00	0.00	0.00	0.00	0.00	0.00	0.00	0.00	0.00	0.00	0.00
175	0.00	0.00	0.00	0.00	0.00	0.00	0.00	0.00	0.00	0.00	0.00	0.00	0.00	0.00	0.00	0.00	0.00	0.00	0.00
180	0.00	0.00	0.00	0.00	0.00	0.00	0.00	0.00	0.00	0.00	0.00	0.00	0.00	0.00	0.00	0.00	0.00	0.00	0.00

C Range: 0 - 360DEG

C Interval: 10.0DEG

Test Speed: HIGH

Temperature:25.3°C

Operators:

Test Date:13 December 2022

γ Range: 0 - 150DEG

γ Interval: 2.5DEG

Test System:EVERFINE GO-2000A\_V1 SYSTEM V2.00.456

Humidity:65.0%

Test Distance:6.265m [K=1.0000]

Remarks:

## LUMINOUS DISTRIBUTION INTENSITY DATA

NAME: 99LPL094/ABR	TYPE:	WEIGHT: 1
SPEC.:	DIM.: 300 x 110 x 25	SERIAL No.: 0
MFR.: Elmark Industries JSC	SUR.: rectangle	Shielding Angle:

Table--2

UNIT: cd

C (DEG) γ (DEG)	190	200	210	220	230	240	250	260	270	280	290	300	310	320	330	340	350		
0	1.07	1.07	1.07	1.07	1.07	1.07	1.07	1.07	1.07	1.07	1.07	1.07	1.07	1.07	1.07	1.07	1.07		
5	1.35	3.21	5.28	6.70	8.67	9.63	11.3	11.4	12.3	11.4	11.5	10.1	9.32	7.39	6.09	4.00	2.12		
10	3.09	6.98	11.2	14.4	18.6	20.9	24.4	25.0	26.6	24.7	24.7	21.6	19.8	15.6	12.6	8.30	4.48		
15	4.88	10.8	17.4	22.6	29.3	33.1	38.7	39.8	42.4	39.4	39.3	34.2	31.1	24.4	19.5	12.7	6.78		
20	6.58	14.6	23.9	31.1	40.6	46.1	53.9	55.5	59.0	54.9	54.6	47.6	43.0	33.7	26.7	17.2	9.02		
25	8.24	18.5	30.4	40.0	52.1	59.3	69.3	71.4	75.8	70.6	70.2	61.2	55.2	43.1	34.0	21.7	11.2		
30	9.83	22.4	37.0	48.8	63.6	72.3	84.5	86.8	92.4	85.9	85.5	74.6	67.3	52.6	41.4	26.3	13.4		
35	11.4	26.1	43.4	57.4	74.8	85.0	99.4	102	109	101	101	87.4	79.1	61.8	48.6	30.7	15.5		
40	12.8	29.7	49.6	65.6	85.6	97.1	114	117	124	115	115	100.0	90.4	70.6	55.4	35.0	17.4		
45	14.1	33.1	55.4	73.4	95.8	109	127	130	139	129	128	112	101	79.0	61.9	39.0	19.3		
50	15.4	36.3	60.8	80.7	105	119	139	143	152	142	141	123	111	86.9	67.9	42.7	21.0		
55	16.5	39.1	65.8	87.4	114	129	151	155	164	153	152	133	120	94.0	73.4	46.0	22.6		
60	17.4	41.5	70.3	93.4	122	138	161	165	175	163	162	142	128	100	78.4	48.9	23.9		
65	18.0	43.7	74.2	98.6	128	145	169	174	185	172	171	149	135	106	82.7	51.5	24.9		
70	18.5	45.6	77.5	103	134	151	176	182	192	179	178	156	141	110	86.3	53.7	25.5		
75	19.0	47.0	80.0	106	138	156	182	188	199	185	184	161	145	114	89.1	55.4	26.2		
80	19.3	48.1	81.8	109	141	160	186	192	203	189	188	164	148	116	91.1	56.6	26.7		
85	19.5	48.7	82.8	110	143	162	188	194	206	192	190	166	150	118	92.1	57.3	26.9		
90	19.5	48.8	83.1	110	143	162	189	195	207	193	191	167	151	118	92.4	57.4	27.0		
95	19.4	48.5	82.7	110	143	162	188	194	206	192	190	166	150	118	92.0	57.1	26.8		
100	19.1	47.9	81.6	108	141	160	186	192	203	190	188	164	148	116	90.7	56.4	26.4		
105	18.7	46.7	79.7	106	138	157	182	188	199	186	184	161	145	114	88.7	55.1	25.8		
110	17.9	45.2	77.1	103	133	152	176	182	192	180	178	156	140	110	85.8	53.2	24.9		
115	15.1	43.2	73.7	98.3	128	146	169	174	185	172	171	150	135	105	82.1	50.9	21.9		
120	12.7	39.4	69.8	93.1	121	138	160	166	175	164	162	142	128	100.0	77.8	48.1	17.6		
125	10.8	29.4	65.2	87.1	114	129	150	156	164	154	152	133	120	93.6	72.7	41.9	14.6		
130	9.24	23.9	58.4	80.4	105	120	139	144	152	142	140	123	111	86.5	66.8	28.2	12.3		
135	7.84	19.9	45.6	72.7	95.3	109	126	131	138	130	128	112	101	78.5	54.5	22.5	10.3		
140	6.58	18.9	32.4	59.9	84.7	97.1	113	117	123	116	114	100	89.7	68.0	44.2	21.9	8.56		
145	5.42	15.6	25.2	39.5	65.2	83.9	98.3	102	108	101	99.4	86.9	73.4	48.1	23.3	17.6	7.02		
150	4.35	10.7	23.4	22.1	39.0	57.0	76.2	84.1	90.0	83.6	79.1	61.0	41.6	22.5	25.7	13.7	5.62		
155	0.00	0.00	0.00	0.00	0.00	0.00	0.00	0.00	0.00	0.00	0.00	0.00	0.00	0.00	0.00	0.00	0.00		
160	0.00	0.00	0.00	0.00	0.00	0.00	0.00	0.00	0.00	0.00	0.00	0.00	0.00	0.00	0.00	0.00	0.00		
165	0.00	0.00	0.00	0.00	0.00	0.00	0.00	0.00	0.00	0.00	0.00	0.00	0.00	0.00	0.00	0.00	0.00		
170	0.00	0.00	0.00	0.00	0.00	0.00	0.00	0.00	0.00	0.00	0.00	0.00	0.00	0.00	0.00	0.00	0.00		
175	0.00	0.00	0.00	0.00	0.00	0.00	0.00	0.00	0.00	0.00	0.00	0.00	0.00	0.00	0.00	0.00	0.00		
180	0.00	0.00	0.00	0.00	0.00	0.00	0.00	0.00	0.00	0.00	0.00	0.00	0.00	0.00	0.00	0.00	0.00		

C Range: 0 - 360DEG

C Interval: 10.0DEG

Test Speed: HIGH

Temperature:25.3°C

Operators:

Test Date:13 December 2022

γ Range: 0 - 150DEG

γ Interval: 2.5DEG

Test System:EVERFINE GO-2000A\_V1 SYSTEM V2.00.456

Humidity:65.0%

Test Distance:6.265m [K=1.0000]

Remarks: